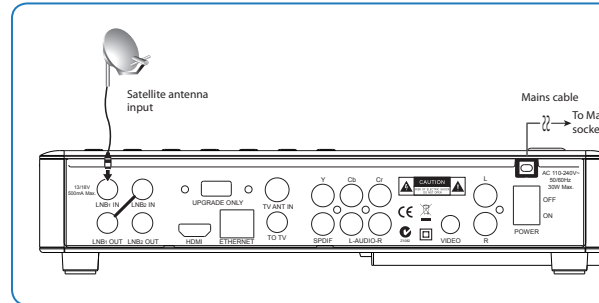


QUICK REFERENCE GUIDE DTVS-DSR2

- Connect mains plug last, ensure your receiver is connected to the TV and Dish before plugging in to mains power.
- Please follow this guide for a successful first time set up.
- Read all the safety instructions carefully before use and keep the instruction manual for future reference.

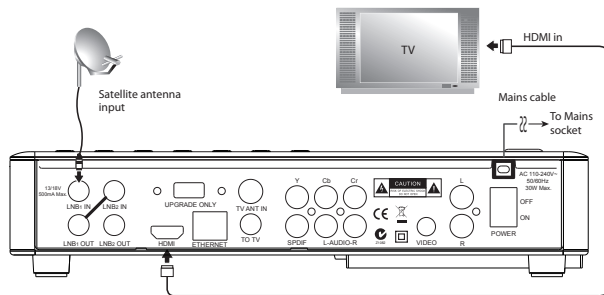
1 CONNECTING YOUR SATELLITE DISH



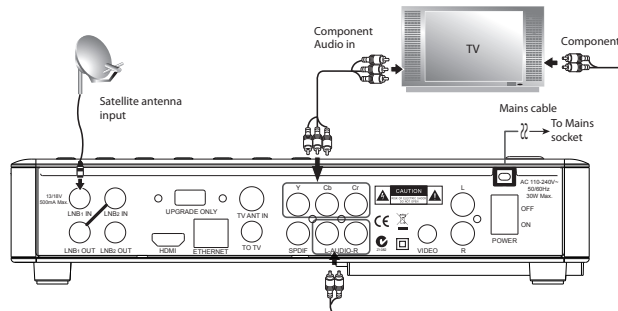
- Connect the satellite dish cable to **LNB₁ IN**.
- Connect one end of the supplied loop cable to **LNB₁ OUT**.
- Connect the other end of the loop cable to **LNB₂ IN**.

2 CONNECT TO YOUR TV, USE ANY OF THE FOLLOWING 4 OPTIONS

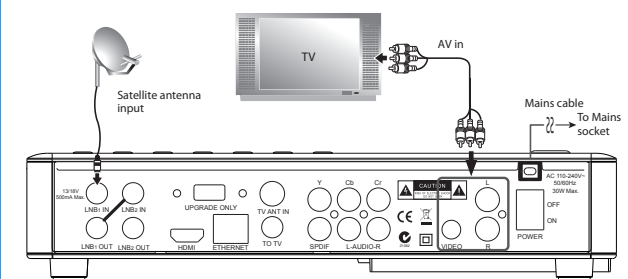
a) Connecting via HDMI



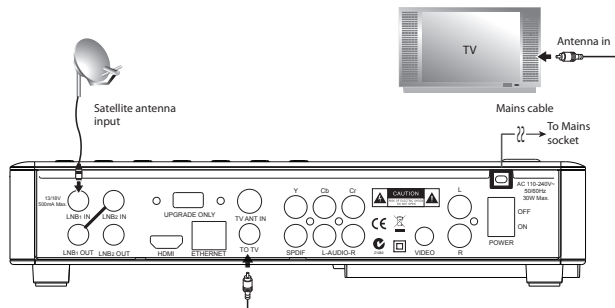
b) Connecting via Component



c) Connecting via Composite

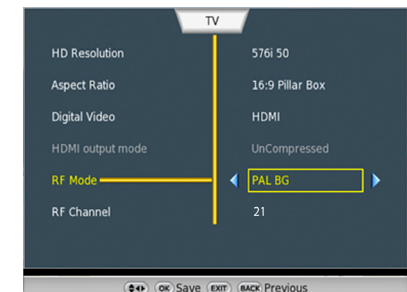


d) Connecting via RF



When using the RF output to connect the receiver to the television please ensure that you tune in the receiver to a channel on your TV. The default UHF channel is set to 21.

In the main menu you can press the **▲▼** buttons to select **System Configuration** and use the **▲▼** buttons to select **RF Setup** and then press the **◀▶** buttons to choose the options to adjust the settings.



3 TUNING INSTRUCTIONS

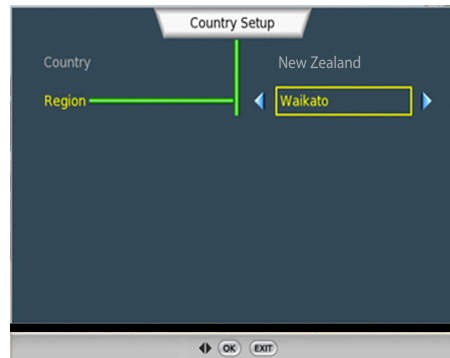
Step 1

Plug in the mains plug into the mains socket after you have completed all the connections. Then you can turn switch on on rear panel of your set-top-box.



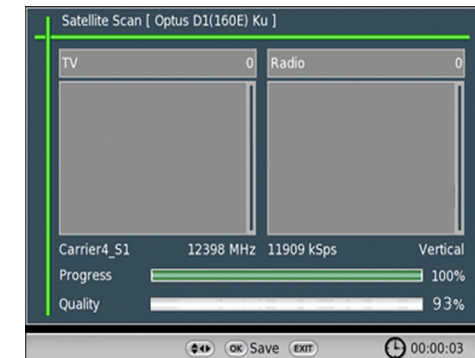
Step 2

When your set-top-box is switched on for the first time, a **Setup Screen** will be displayed. Use the ◀▶ buttons to select the region and press the **OK** button on the remote control or the Unit to confirm.



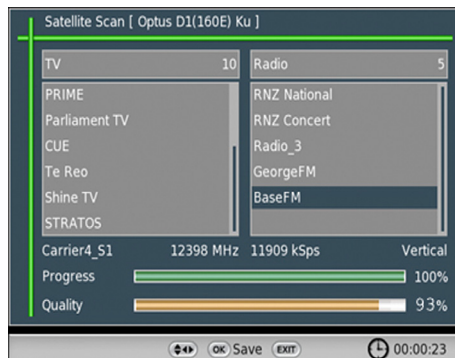
Step 3

The receiver will automatically detect the signal and will show progress and signal quality. Once a signal is found, the receiver will begin searching for channels.



Step 4

During the channel search, the channel found will be displayed. Please allow a few minutes for the channels to be tuned in.



Step 5

Once all the channels are found the receiver will save the channels and exit automatically and you can begin watching the channels.

Troubleshooting

If you get a "Tuning Failed" or "Database Empty" message, please try the following:

- 1) Check your connections to the satellite dish.
- 2) Ensure your dish is installed correctly.
- 3) Retry installation after performing "Factory Default"

For further assistance you can check for more information on the DTV Solutions website, www.dtv.co.nz or call the help line number. **0800 388 765**